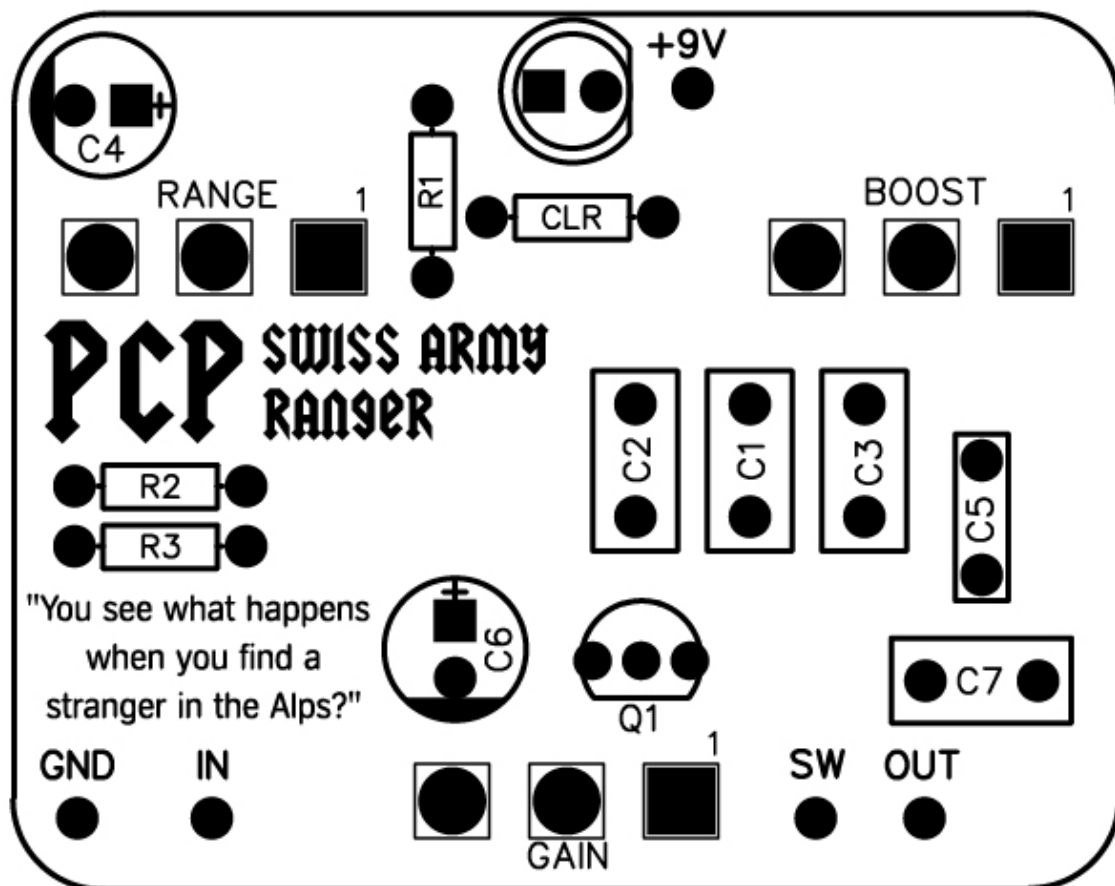


# POST CULTURE PEDALS

## SWISS ARMY RANGER

postculturepedals.com



# Parts

---

## Resistors:

- 1 6.8k - CLR (blue, grey, black, brown, brown)
- 1 8.2k - R3 (grey, red, black, brown, brown)
- 1 68k - R2 (blue, grey, black, red, brown)
- 1 220k - R1 (red, red, black, orange, brown)

## Capacitors:

- 1 1nf (102) Polyfilm - C3
- 1 10nf (103) Polyfilm - C7
- 1 3.3nf (332) Polyfilm - C1
- 1 68nf (683) Polyfilm - C2
- 1 47pf ceramic - C5
- 2 47uf electrolytic C4, C6

## Semiconductors:

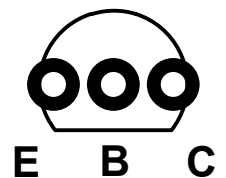
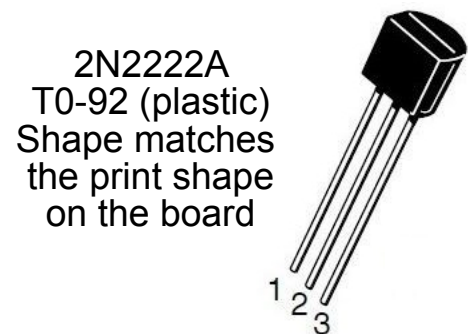
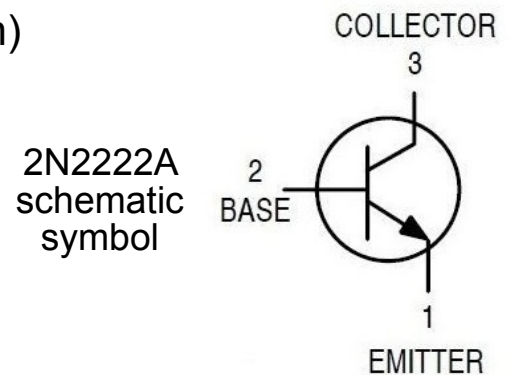
- 1 5mm LED
- 1 2N2222A NPN - Q1

## Potentiometers:

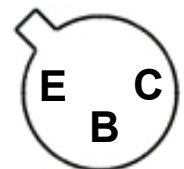
- 1 B1K - Gain
- 1 B10K - Boost
- 1 A500K - Range

## Hardware:

- 1 Enclosure
- 1 3PDT Footswitch
- 2 Mono Jacks
- 1 DC Jack
- 3 knobs
- 1 LED mount
- Wire



2N2222A T0-18 (metal can)  
TOP VIEW  
tab goes on left side when inserting into board



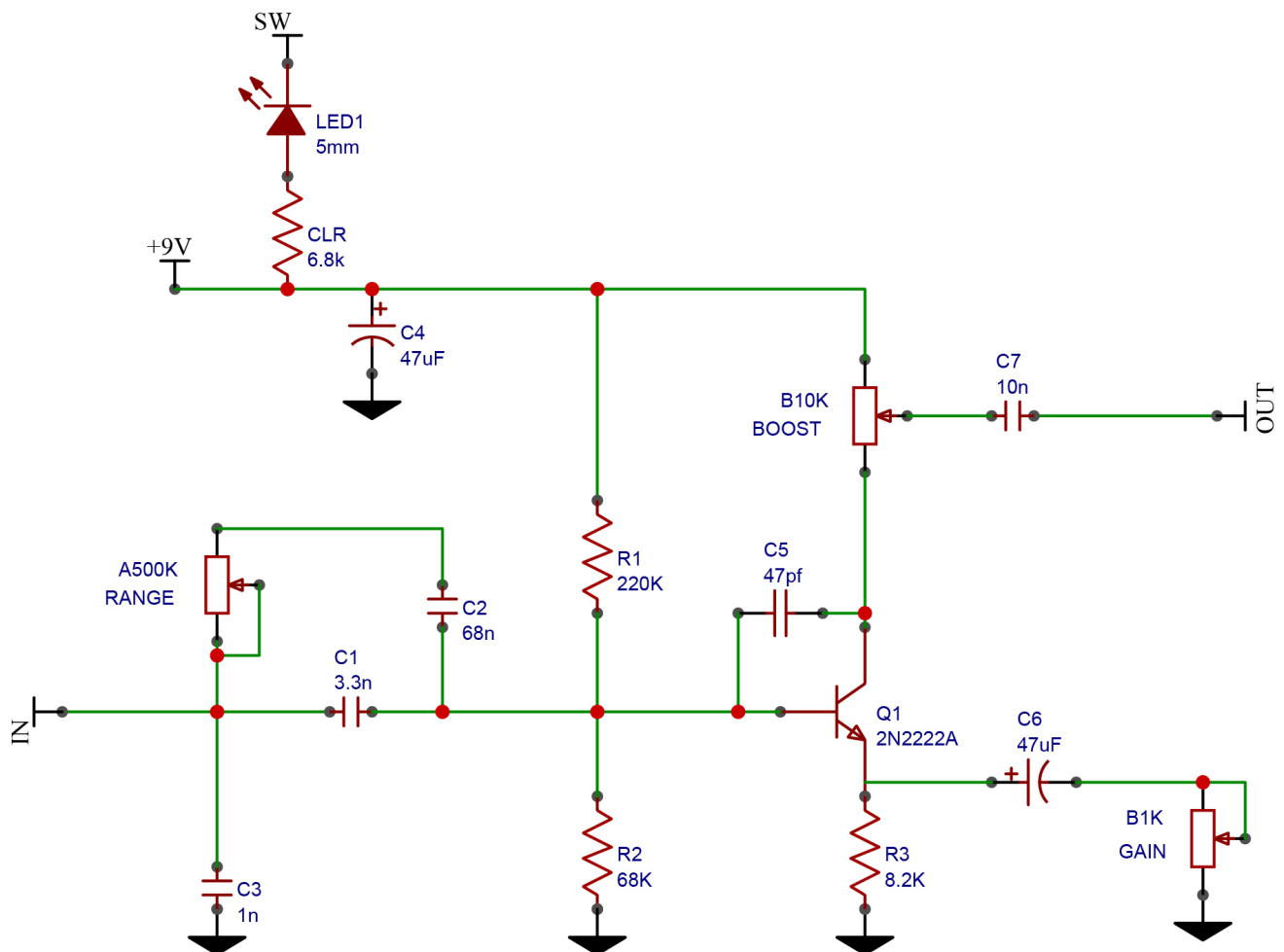
# Operation

---

Boost controls the output volume of the effect. Unity to the bypass signal on this pedal is around 2 o'clock.

Range controls the frequencies being boosted. Full clockwise is the traditional treble boost, around 10 - 11 o'clock is full frequency, and less than 10 o'clock bass starts to get boosted

Gain: How dirty the tone is. Full clockwise is the traditional amount of dirt, as you turn it counter clockwise it starts to clean up.



# 1590B Drill Template

Print at 100%  
Compare printed template  
with PCB before drilling!

